



# JONES POTTS TAYLOR



## 39 Ellesmere Road

, Bolton, BL3 3JT

£149,950

JonesPottsTaylor are delighted to present FOR SALE this immaculately presented, garden fronted, mid-terrace property. Situated in a popular residential location in Bolton, close to transport and network links, schools, shops and amenities. The property briefly comprises of; entrance vestibule, sitting room, fitted kitchen and a further utility room. To the first floor are two well proportioned bedrooms and a further family bathroom with three-piece suite. Outside to the front is an enclosed garden, whilst to the rear is a well presented, large, enclosed low maintenance garden.

Viewings are highly recommended for this property to fully appreciate the high décor standard and outside space.

- Immaculately Presented
- Popular Location
- Close to Transport & Network Links
- Freehold Tenure
- Large Rear Garden
- Double Glazed PVC Windows & Gas Central Heating

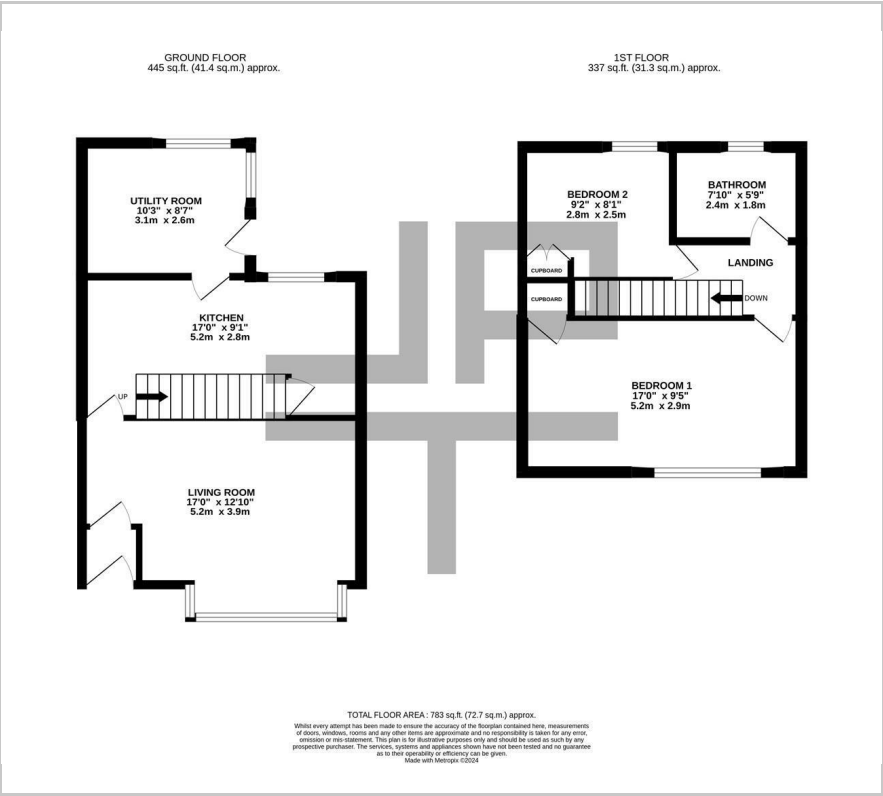
### Viewing

Please contact our Jones Potts Taylor Office on 01942 368600 if you wish to arrange a viewing appointment for this property or require further information.

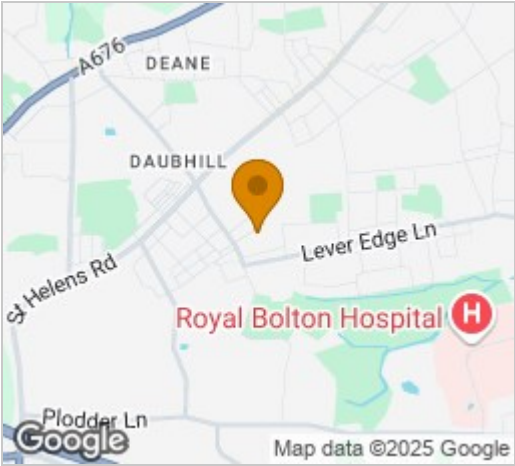




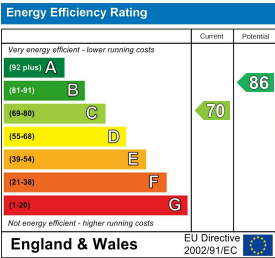
Floor Plan



Area Map



Energy Efficiency Graph



These particulars, whilst believed to be accurate are set out as a general outline only for guidance and do not constitute any part of an offer or contract. Intending purchasers should not rely on them as statements of representation of fact, but must satisfy themselves by inspection or otherwise as to their accuracy. No person in this firms employment has the authority to make or give any representation or warranty in respect of the property.